

Getting to High School in Baltimore: Student Commuting and Public Transportation

Marc L. Stein ^{1,2}
Jeffrey Grigg ^{2,1}
Curt Cronister ²
Celeste Chavis ^{3,2}
Faith Connolly ²

January 2017

Figures Appendix

¹ Johns Hopkins University; School of Education

² Baltimore Education Research Consortium

³ Morgan State University; School of Engineering

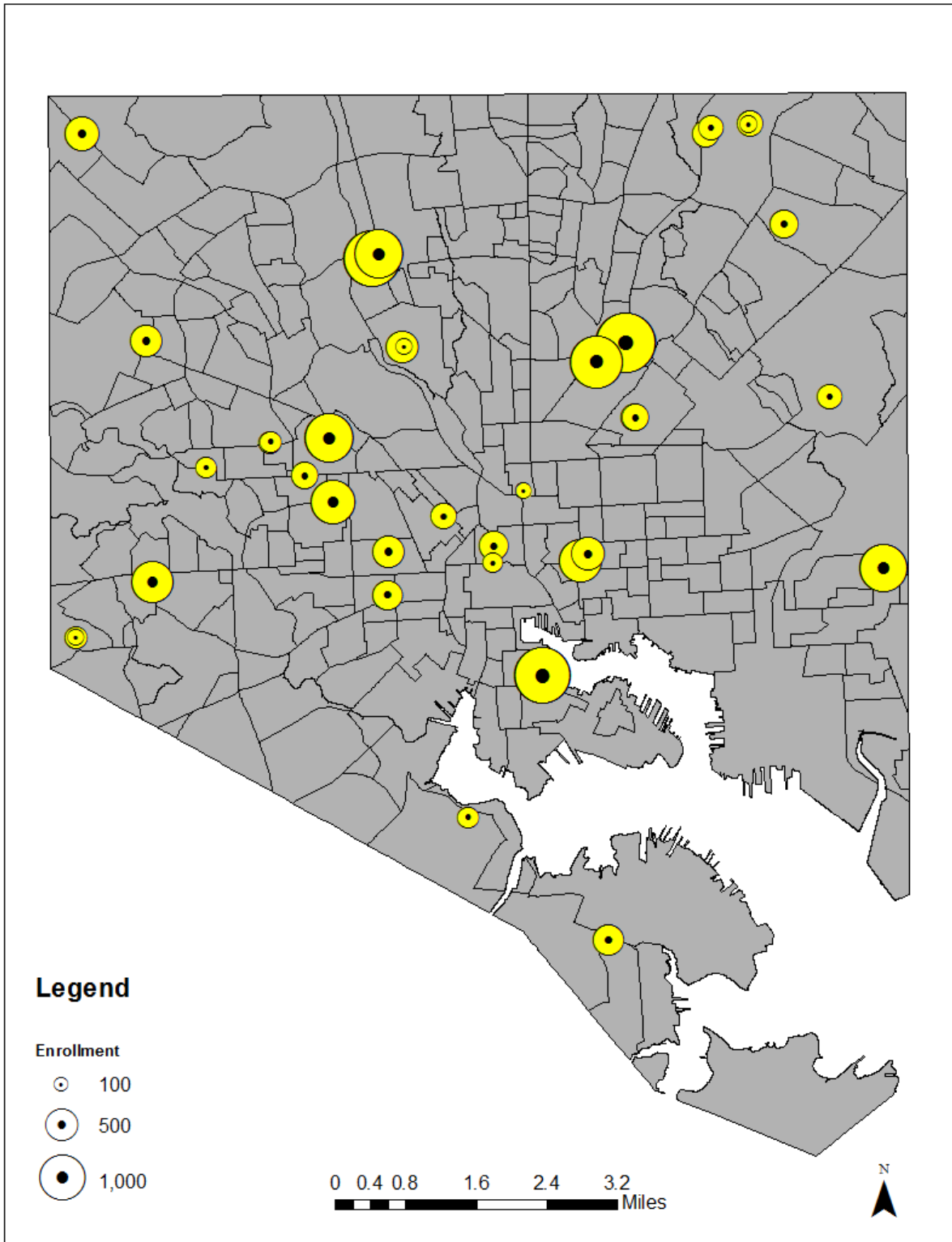


Figure 1: High school locations

Note: Icon size proportional to school enrollment

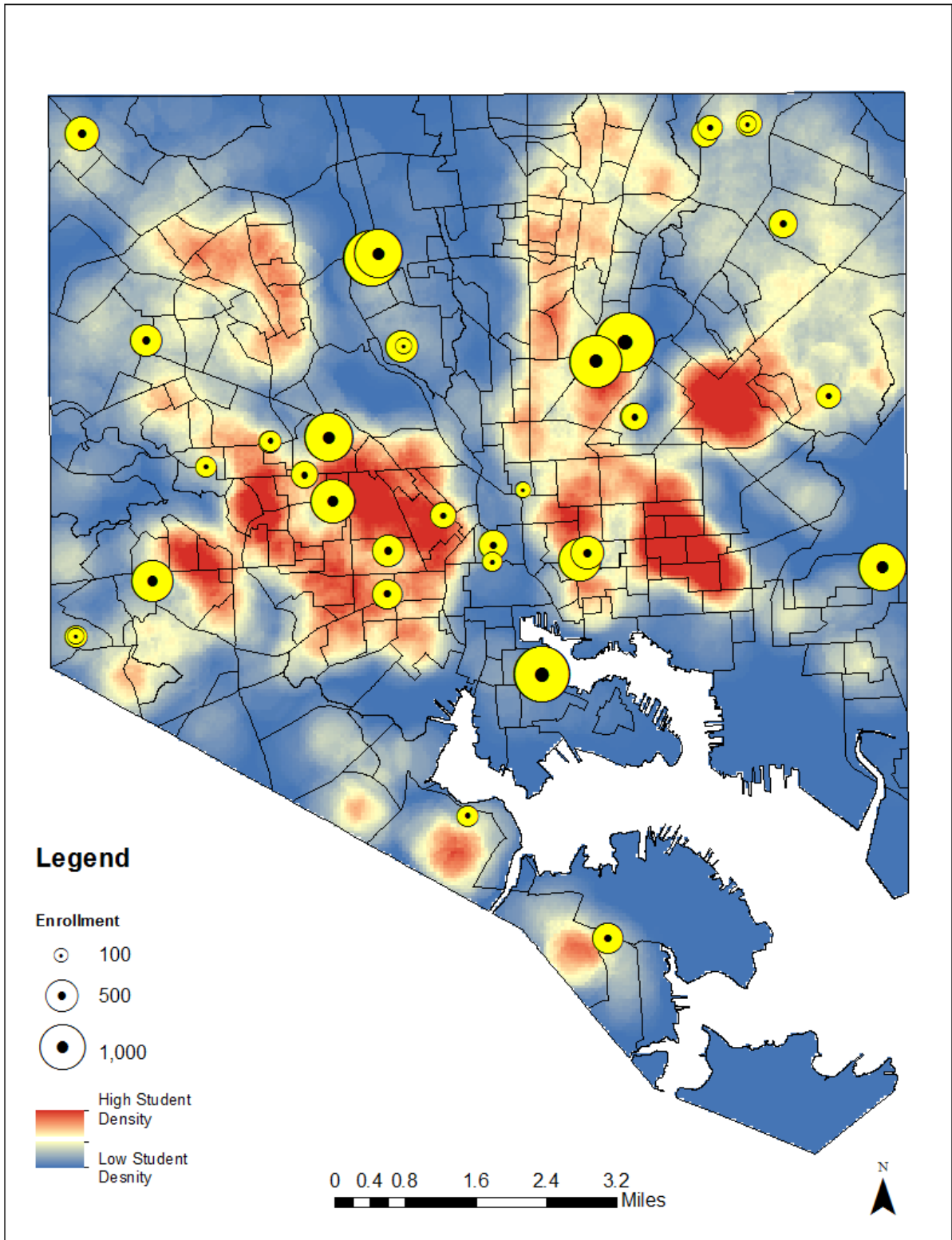


Figure 2: Distribution of high school students

Note: Icon size proportional to school enrollment

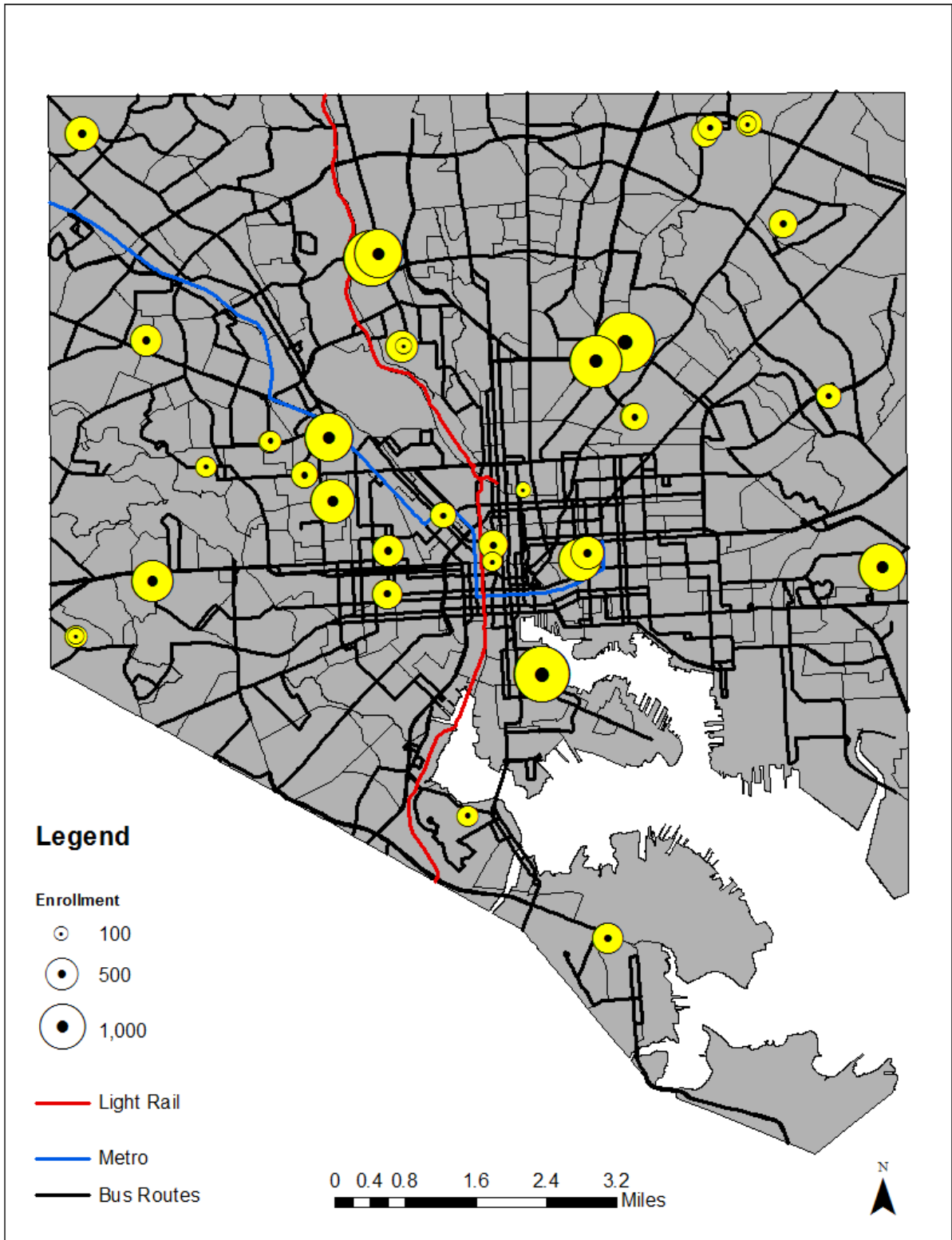


Figure 3: Baltimore's public transportation network

Note: Icon size proportional to school enrollment

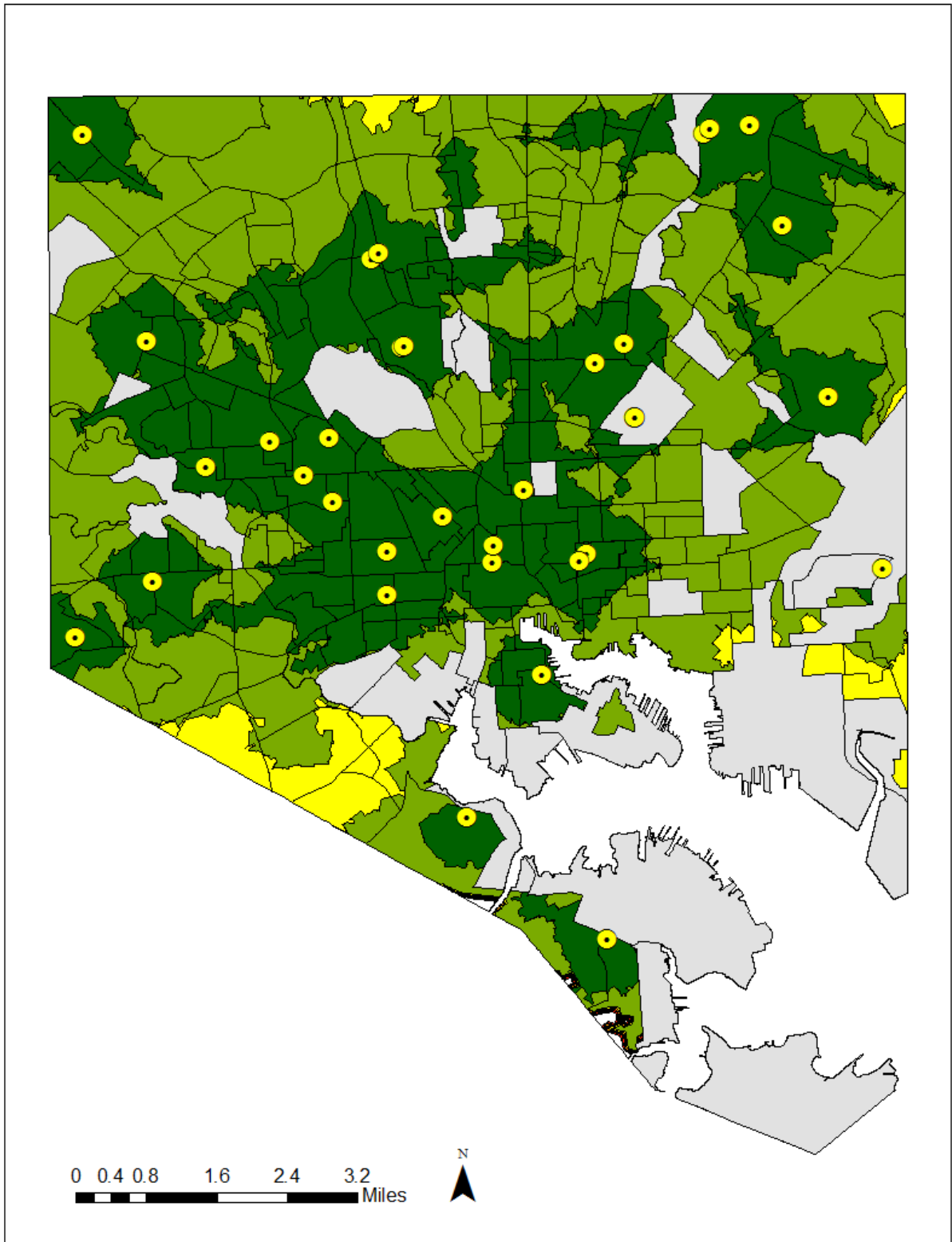


Figure 4a: Commute sheds for all high schools

Note: Nonresidential areas in gray

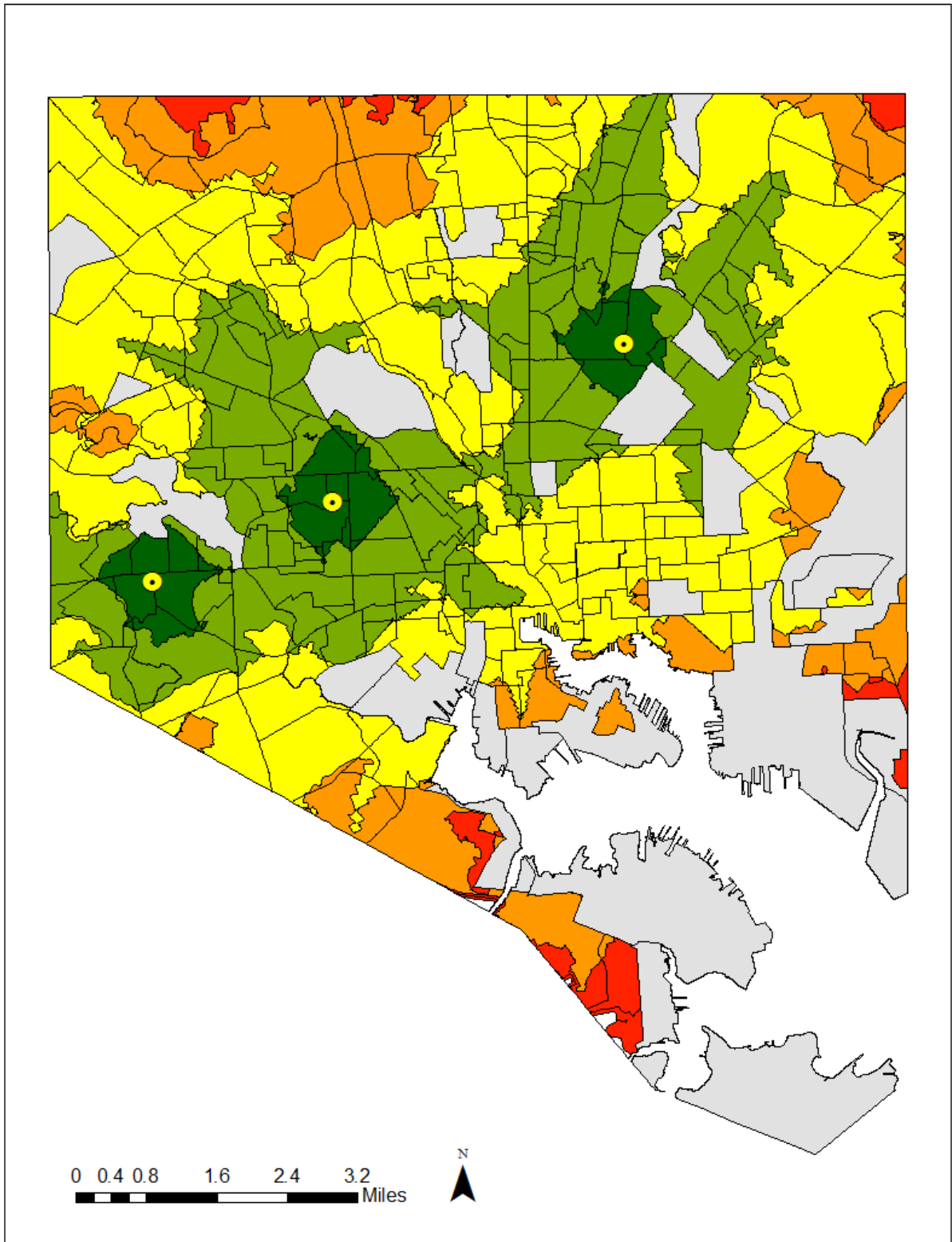


Figure 4b: Commute sheds for selective CTE schools

Note: Nonresidential areas in gray

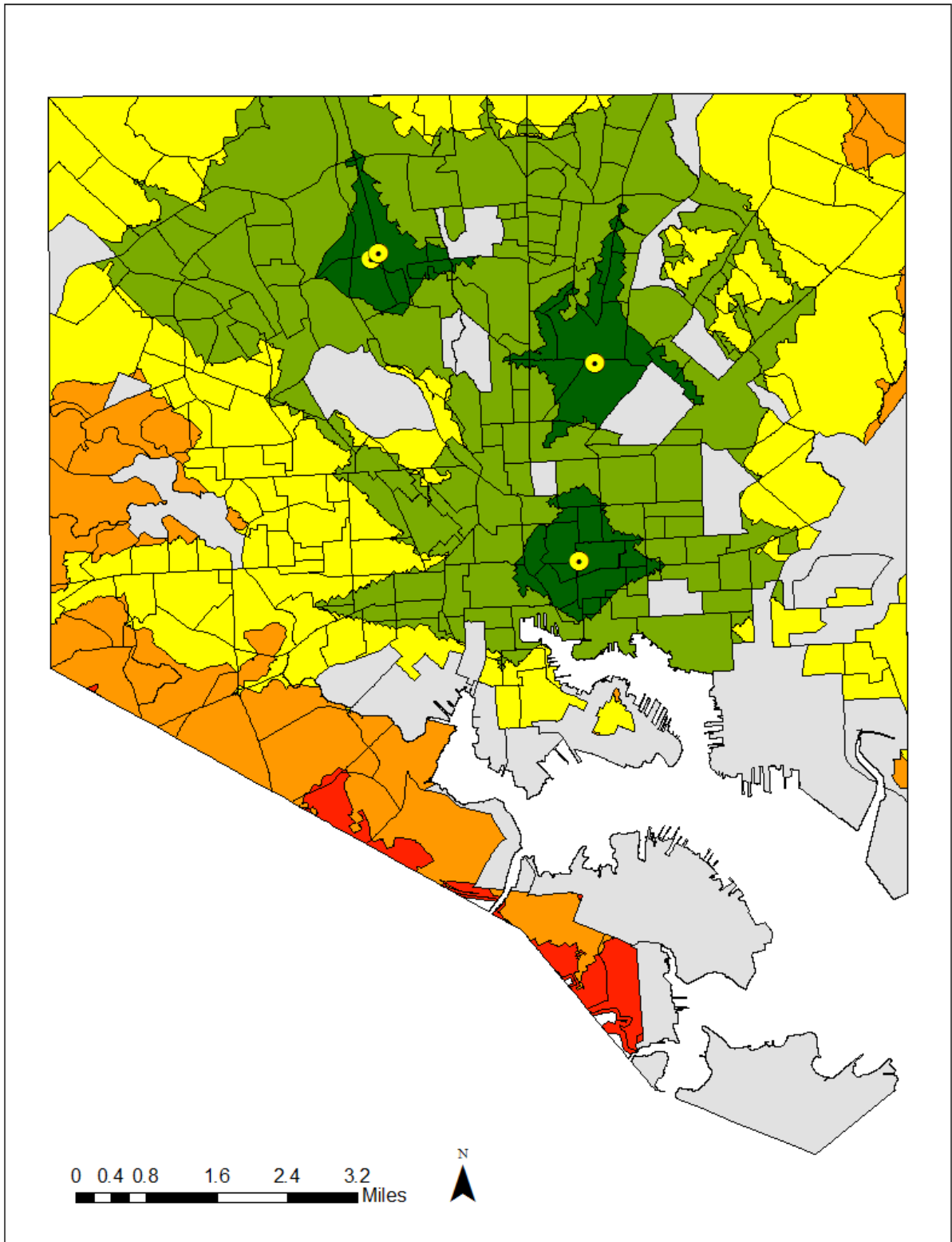


Figure 4c: Commute sheds for highly selective schools

Note: Nonresidential areas in gray

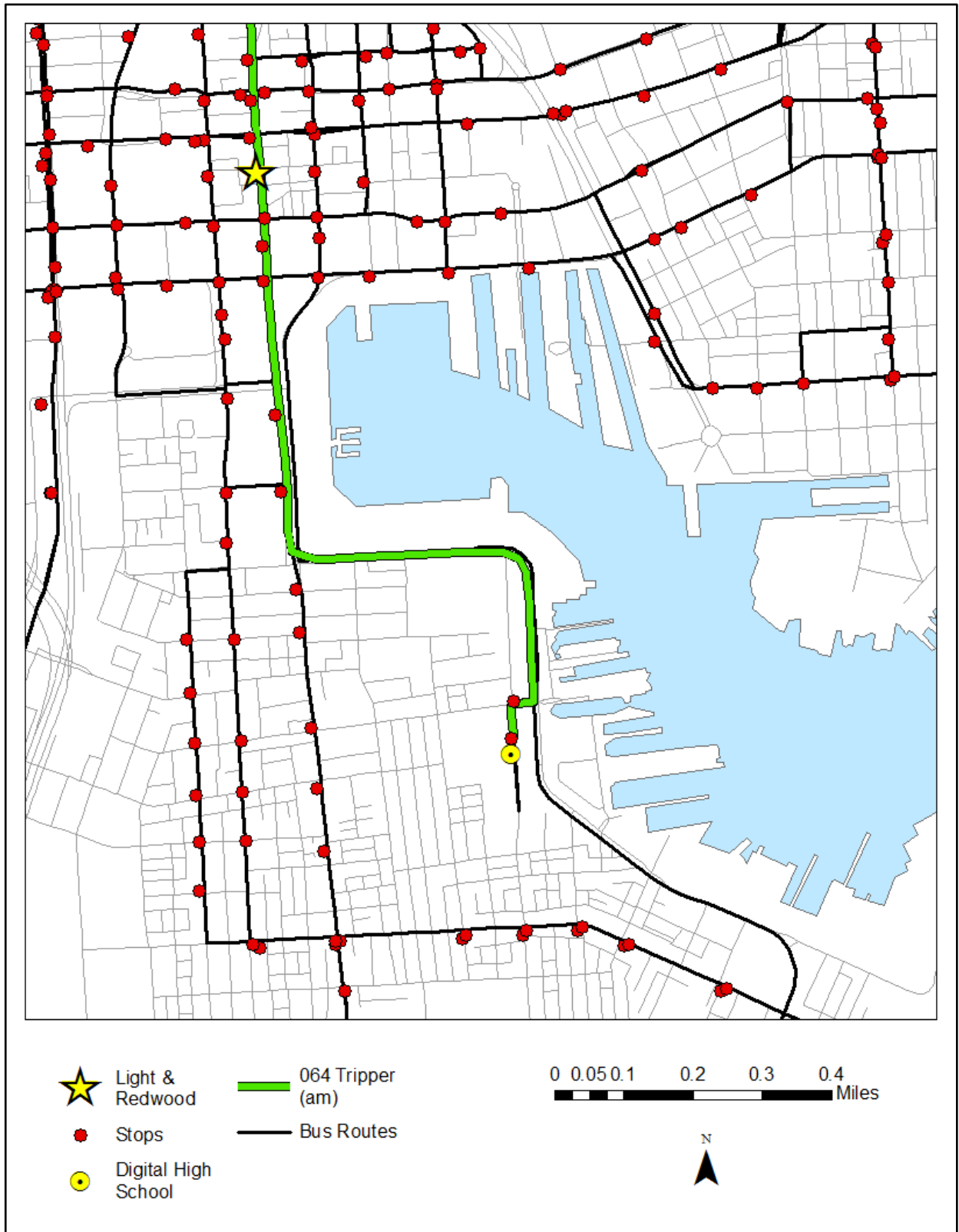


Figure 5: Digital High School bottleneck and last mile problems